

Student Satisfaction Survey 2021-22

Criteria: Teaching-Learning and Evaluation

Instructions to fill the questionnaire

- All questions should be compulsorily attempted
- Each question has five responses, choose the most appropriate one

A) Please confirm this is the first and only time you answer this survey.

a) Yes

b) No

B) Age:

C) College Name:

D) What degree program are you pursuing now?

a) Bachelor's

b) Master's

c) Bachelor's + Add on course

d) Bachelor's (Vocational)

e) Other

E) What subject are you currently pursuing?

a) Arts

b) Commerce

c) Medical/Non-medical/Home science/Biotechnology

d) BBA

e) Other

1) How much of the syllabus was covered in the class?

4- 85 to 100%

3- 70 to 84%

2- 55 to 69%

1-30 to 54%

0-Below 30%

2) How well did the teachers prepare for the classes?

- 4-Thoroughly
- 3-Satisfactorily
- 2-Poorly
- 1-Indifferently
- 0-Won't teach at all

Q3) How well were the teachers able to communicate?

- 4-Always effective
- 3-Sometimes effective
- 2-Just satisfactorily
- 1-Generally ineffective
- 0-Very poor communication

Q4) How will you rate the teacher's in depth knowledge of subject?

- 4-Excellent
- 3-Very good
- 2-Good
- 1-Fair
- 0-Poor

Q5) How fair was the internal evaluation process by the teachers?

- 4-Always fair
- 3-Usually fair
- 2-Sometimes Unfair
- 1-Usually unfair
- 0-Unfair

Q6) Was your performance in internal evaluation discussed with you?

- 4-Everytime
- 3-Usually
- 2-Occasionally / sometimes
- 1-Rarely
- 0-Never

Q 7) Does the institute take active interest in promoting exposure through educational trips?

4-Regularly

3-Often

2-Sometimes

1-Rarely

0-Never

Q8) Is the teaching and learning process in your institution helpful in cognitive, social and emotional growth?

4-Significantly

3-Very well

2-Moderately

1-Marginally

0-Not at all

Q9) Does the institution provide multiple opportunities to learn and grow?

4-Strongly agree

3-Agree

2-Neutral

1-Disagree

0-Strongly disagree

Q10) Do the teachers inform you about your expected competencies, course outcomes and programme outcomes?

4-Everytime

3-Usually

2-Occasionally / sometimes

1-Rarely

0-Never

Q 11) Does your teacher do a necessary follow up with an assigned task to you?

4-Everytime

3-Usually

2-Occasionally / sometimes

1-Rarely

0-Never

Q12) Do the teachers illustrate the concepts through examples and applications?

4-Everytime

3-Usually

2-Occasionally / sometimes

1-Rarely

0-Never

Q 13) Do the teachers identify your strengths and encourage you with providing right level of challenges

4-Fully

3-Reasonably

2-Partially

1-Slightly

0-Unable to

Q 14) Are your teachers able to identify your weaknesses and help you to overcome them?

4-Everytime

3-Usually

2-Occasionally / sometime

1-Rarely

0-Never

Q 15) Does the institution make effort to engage students in the monitoring , review and continuous quality improvement of the teaching learning process ?

4-Strongly agree

3-Agree

2-Neutral

1-Disagree

0-Strongly Disagree

Q 16) Do the teachers use student centric methods such as participative learning and problem solving methodologies for enhancing learning experiences ?

4-To a great extent

- 3-Moderate
- 2-Somewhat
- 1-Very little
- 0-Not at all

Q 17) Do your teachers encourage you to participate in extracurricular activities ?

- 4-Strongly agree
- 3-Agree
- 2-Neutral
- 1-Very little
- 0-Not at all

Q 18) Are efforts made by the institute / teachers to inculcate soft skills, life skills and employability skills to make you ready for the world of work ?

- 4-To a great extent
- 3-Moderate
- 2-Somewhat
- 1-Very little
- 0-Not at all

Q19) What percentage of teachers take up academic problems of the students beyond the classroom ?

- 4-Above 90%
- 3-70 to 89%
- 2-50 to 69%
- 1-30 to 49%
- 0-Below 29%

Q 20) Is the overall quality of teaching-learning process in your institute very good ?

- 4-Strongly agree
- 3-Agree
- 2-Neutral
- 1-Disagree
- 0-Strongly disagree

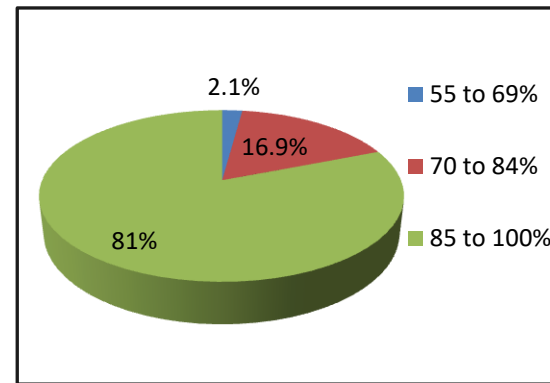
Q 21) Give observations / suggestions to improve the overall teaching – learning experience in your institution.

Survey Feedback From Students

The feedback obtained from students is analyzed and reported. Responses of 189 respondents was analyzed. SPSS software is used for analysis of the statistical data. The report prepared is used to identify weak points and take steps to improve them.

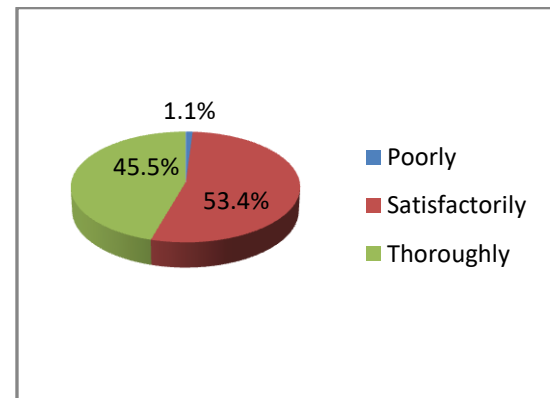
Q1) How much of the syllabus was covered in the class?

Particulars	Frequency	Percent	Mean	Rating
55 to 69%	4	2.1	3.7	Excellent
70 to 84%	32	16.9		
85 to 100%	153	81.0		
Total	189	100.0		



Q2) How well did the teachers prepare for the classes?

Particulars	Frequency	Percent	Mean	Rating
Poorly	2	1.1	3.4	Very Good
Satisfactorily	101	53.4		
Thoroughly	86	45.5		
Total	189	100.0		



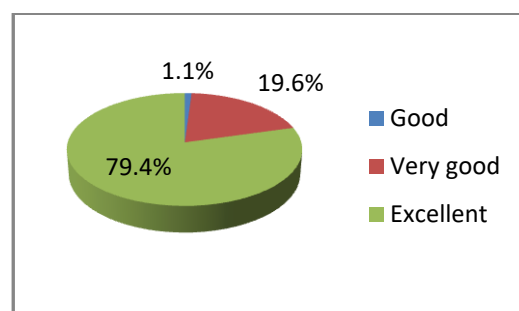
Q3) How well were the teachers able to communicate?

Particulars	Frequency	Percent	Mean	Rating
Just satisfactorily	5	2.6	3.8	Excellent
Sometimes effective	15	7.9		
Always effective	169	89.4		
Total	189	100.0		



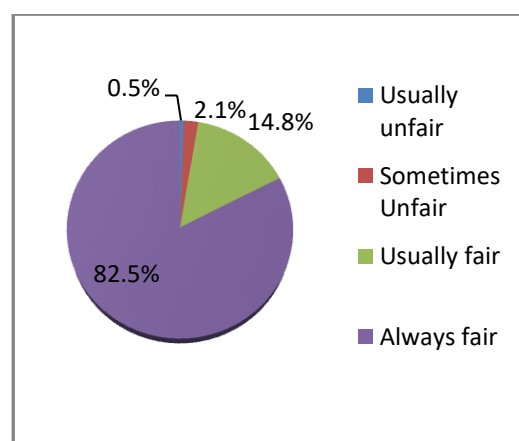
Q4) How will you rate the teacher's in depth knowledge of subject?

Particulars	Frequency	Percent	Mean	Rating
Good	2	1.1	3.78	Excellent
Very good	37	19.6		
Excellent	150	79.4		
Total	189	100.0		



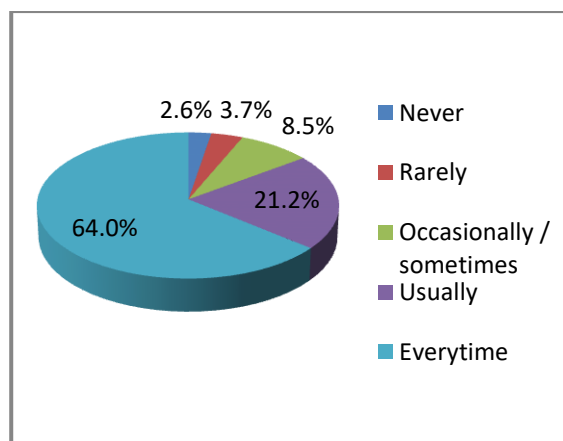
Q5) How fair was the internal evaluation process by the teachers?

Particulars	Frequency	Percent	Mean	Rating
Usually unfair	1	0.5	3.7	Excellent
Sometimes Unfair	4	2.1		
Usually fair	28	14.8		
Always fair	156	82.5		
Total	189	100.0		



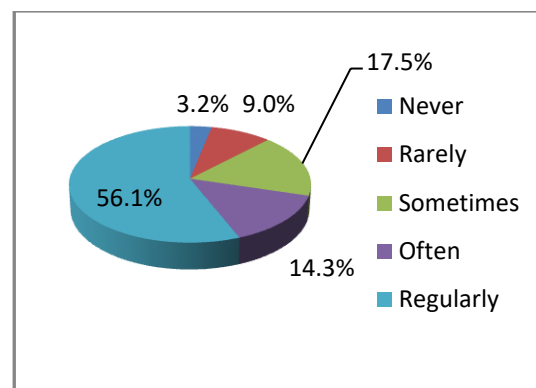
Q6) Was your performance in internal evaluation discussed with you?

Particulars	Frequency	Percent	Mean	Rating
Never	5	2.6	3.4	Very Good
Rarely	7	3.7		
Occasionally / sometimes	16	8.5		
Usually	40	21.2		
Everytime	121	64.0		
Total	189	100.0		



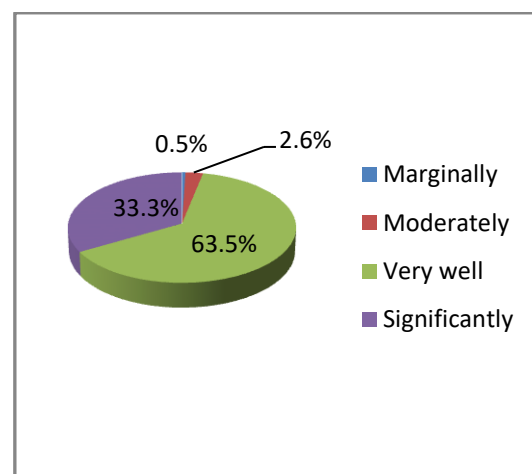
Q7) Does the institute take active interest in promoting exposure through educational trips?

Particulars	Frequency	Percent	Mean	Rating
Never	6	3.2	3.1	Very Good
Rarely	17	9.0		
Sometimes	33	17.5		
Often	27	14.3		
Regularly	106	56.1		
Total	189	100.0		



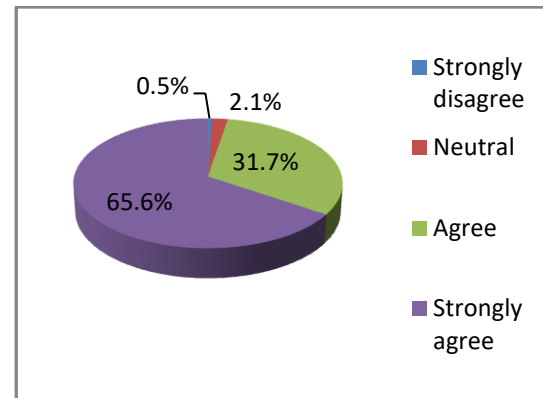
Q 8) Is the teaching and learning process in your institution helpful in cognitive, social and emotional growth?

Particulars	Frequency	Percent	Mean	Rating
Marginally	1	0.5	3.2	Very Good
Moderately	5	2.6		
Very well	120	63.5		
Significantly	63	33.3		
Total	189	100.0		



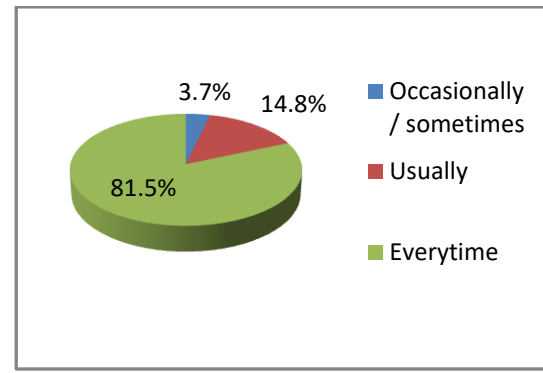
Q9) Does the institution provides multiple opportunities to learn and grow ?

Particulars	Frequency	Percent	Mean	Rating
Strongly disagree	1	0.5	3.6	Excellent
Neutral	4	2.1		
Agree	60	31.7		
Strongly agree	124	65.6		
Total	189	100.0		



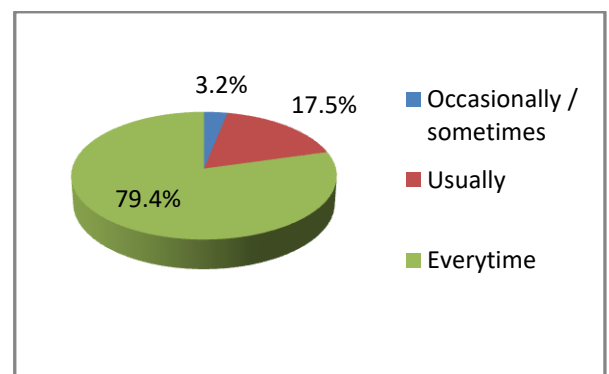
Q10) Do the teachers inform you about your expected competencies, course outcomes and program outcomes?

Particulars	Frequency	Percent	Mean	Rating
Occasionally / sometimes	7	3.7	3.7	Excellent
Usually	28	14.8		
Everytime	154	81.5		
Total	189	100.0		



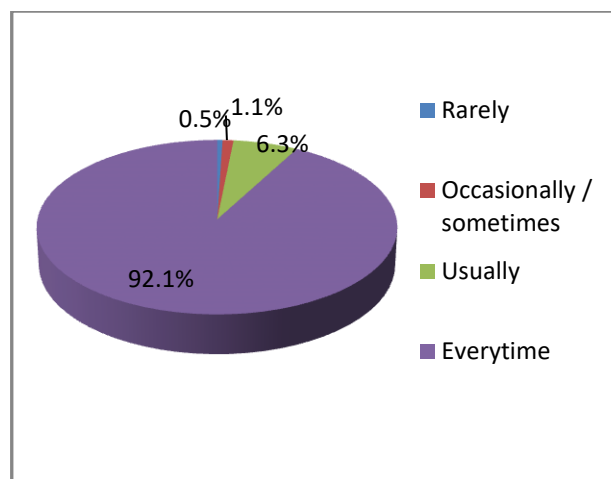
Q11) Does your teacher do a necessary follow up with an assigned task to you?

Particulars	Frequency	Percent	Mean	Rating
Occasionally / sometimes	6	3.2	3.7	Excellent
Usually	33	17.5		
Everytime	150	79.4		
Total	189	100.0		



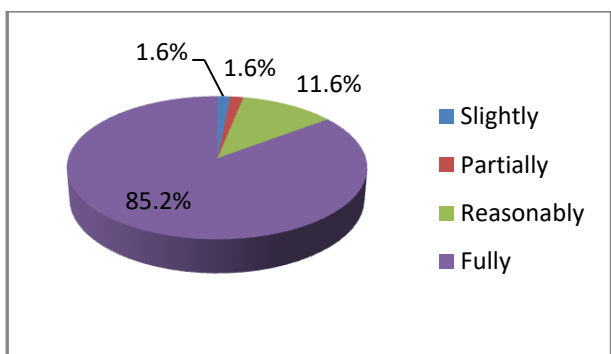
Q12) Do the teachers illustrate the concepts through examples and applications?

Particulars	Frequency	Percent	Mean	Rating
Rarely	1	0.5	3.8	Excellent
Occasionally / sometimes	2	1.1		
Usually	12	6.3		
Everytime	174	92.1		
Total	189	100.0		



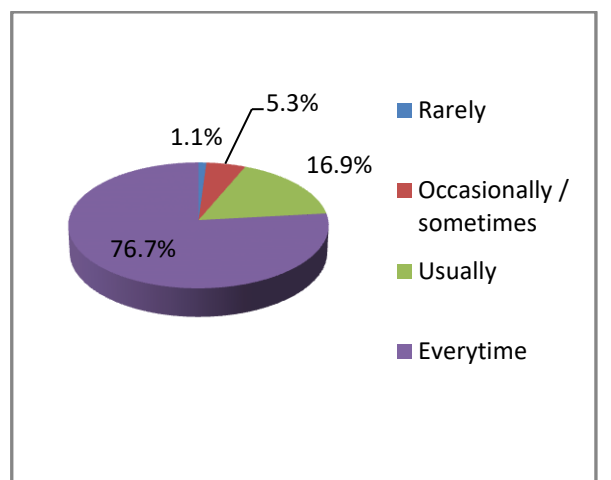
Q13) Do the teachers identify your strengths and encourage you with providing right level of challenges?

Particulars	Frequency	Percent	Mean	Rating
Slightly	3	1.6	3.8	Excellent
Partially	3	1.6		
Reasonably	22	11.6		
Fully	161	85.2		
Total	189	100.0		



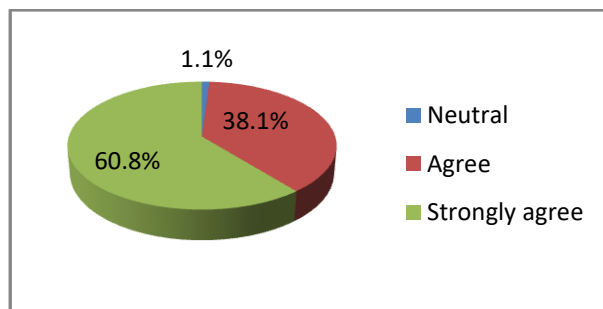
Q14) Are your teachers able to identify your weaknesses and help you to overcome them?

Particulars	Frequency	Percent	Mean	Rating
Rarely	2	1.1	3.6	Excellent
Occasionally / sometimes	10	5.3		
Usually	32	16.9		
Everytime	145	76.7		
Total	189	100.0		



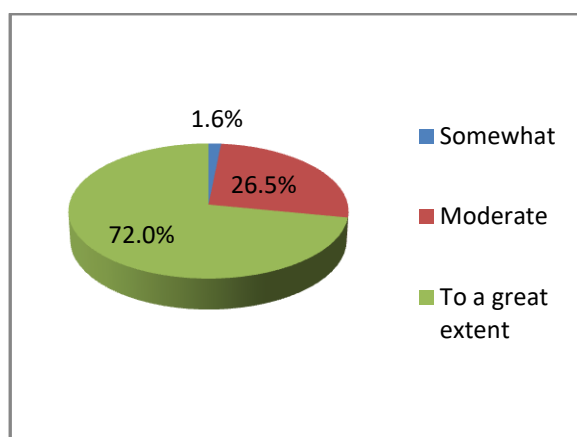
Q15) Does the institution make effort to engage students in the monitoring, review and continuous quality improvement of the teaching learning process?

Particulars	Frequency	Percent	Mean	Rating
Neutral	2	1.1	3.5	Excellent
Agree	72	38.1		
Strongly agree	115	60.8		
Total	189	100.0		



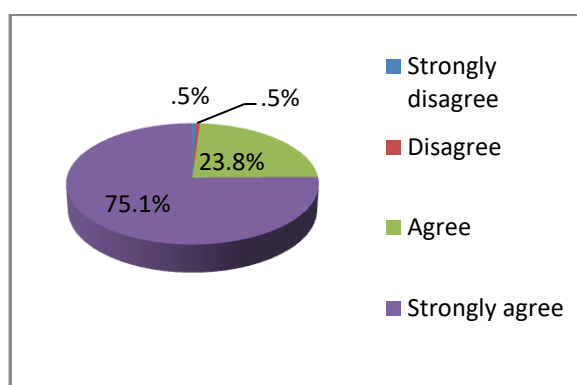
Q16) Do the teachers use student centric methods such as participative learning and problem solving methodologies for enhancing learning experiences?

Particulars	Frequency	Percent	Mean	Rating
Somewhat	3	1.6	3.7	Excellent
Moderate	50	26.5		
To a great extent	136	72		
Total	189	100.0		



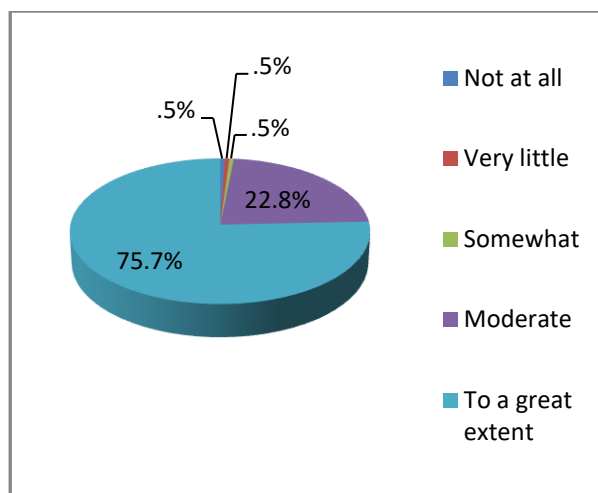
Q17) Do your teachers encourage you to participate in extracurricular activities ?

Particulars	Frequency	Percent	Mean	Rating
Strongly disagree	1	0.5	3.7	Excellent
Disagree	1	0.5		
Agree	45	23.8		
Strongly agree	142	75.1		
Total	189	100.0		



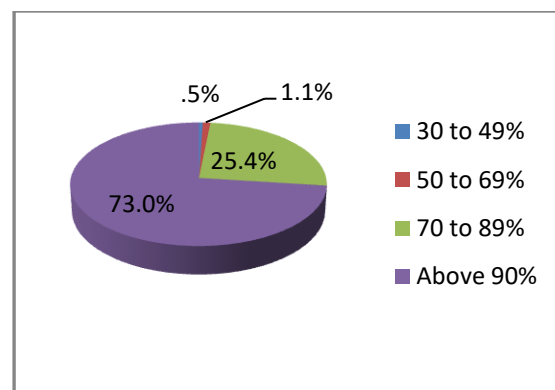
Q18) Are efforts made by the institute / teachers to inculcate soft skills, life skills and employability skills to make you ready for the world of work?

Particulars	Frequency	Percent	Mean	Rating
Not at all	1	0.5	3.7	Excellent
Very little	1	0.5		
Somewhat	1	0.5		
Moderate	43	22.8		
To a great extent	143	75.7		
Total	189	100.0		



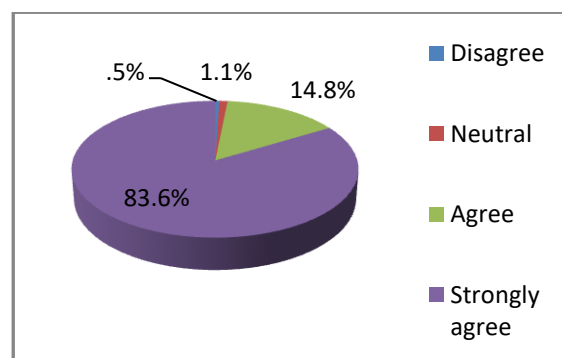
Q19) What percentage of teachers take up academic problems of the students beyond the classroom?

Particulars	Frequency	Percent	Mean	Rating
30 to 49%	1	0.5	3.7	Excellent
50 to 69%	2	1.1		
70 to 89%	48	25.4		
Above 90%	138	73.0		
Total	189	100.0		



Q 20) Is the overall quality of teaching-learning process in your institute very good?

Particulars	Frequency	Percent	Mean	Rating
Disagree	1	0.5	3.8	Excellent
Neutral	2	1.1		
Agree	28	14.8		
Strongly Agree	158	83.6		
Total	189	100.0		



Survey Feedback From Students

Observation:

Out of 20 parameters, 16 were rated as Excellent and 4 were rated as Very Good. The overall quality of teaching-learning process in the institute was given a mean score of 3.8.

Suggestions given by students:

- Students insisted for training of e-library.
- Demand for more use of digital classrooms.
- More books were demanded by students.
- Students appreciated the efforts of teachers in making mentorship successful. A few students demanded personal mentoring.

Strengths:

- Classes are conducted on regular basis.
- Consistency in teaching was well appreciated.
- Teachers are cooperative & supportive in every possible manner.
- Extra Curricular activities and various other competitions are organized to give exposure to girls.
- Equal opportunity for girls to participate in Extra Curricular activities.
- Regular seminars/expert lectures were organized during the session.
- Congenial safe & secure environment for each and every girl student.
- Teachers inform students about expected competencies, course outcomes and program outcomes