

## Student Satisfaction Survey 2020-21

### Criteria: Teaching-Learning and Evaluation

Instructions to fill the questionnaire

- All questions should be compulsorily attempted
- Each question has five responses, choose the most appropriate one

A) Please confirm this is the first and only time you answer this survey.

a) Yes

b) No

B) Age:

C) College Name:

D) What degree program are you pursuing now?

a) Bachelor's

b) Master's

c) Bachelor's + Add on course

d) Bachelor's (Vocational)

e) Other

E) What subject are you currently pursuing?

a) Arts

b) Commerce

c) Medical/Non-medical/Home science/Biotechnology

d) BBA

e) Other

1) How much of the syllabus was covered in the class?

4- 85 to 100%

3- 70 to 84%

2- 55 to 69%

1-30 to 54%

0-Below 30%

2) How well did the teachers prepare for the classes?

- 4-Thoroughly
- 3-Satisfactorily
- 2-Poorly
- 1-Indifferently
- 0-Won't teach at all

Q3) How well were the teachers able to communicate?

- 4-Always effective
- 3-Sometimes effective
- 2-Just satisfactorily
- 1-Generally ineffective
- 0-Very poor communication

Q4) How will you rate the teacher's in depth knowledge of subject?

- 4-Excellent
- 3-Very good
- 2-Good
- 1-Fair
- 0-Poor

Q5) How fair was the internal evaluation process by the teachers?

- 4-Always fair
- 3-Usually fair
- 2-Sometimes Unfair
- 1-Usually unfair
- 0-Unfair

Q6) Was your performance in internal evaluation discussed with you?

- 4-Everytime
- 3-Usually
- 2-Occasionally / sometimes
- 1-Rarely
- 0-Never

Q 7) Does the institution take active interest in promoting exposure through educational trips?

- 4-Regularly
- 3-Often
- 2-Sometimes
- 1-Rarely
- 0-Never

Q8) Is the teaching and learning process in your institution helpful in cognitive, social and emotional growth?

- 4-Significantly
- 3-Very well
- 2-Moderately
- 1-Marginally
- 0-Not at all

Q9) Does the institution provide multiple opportunities to learn and grow?

- 4-Strongly agree
- 3-Agree
- 2-Neutral
- 1-Disagree
- 0-Strongly disagree

Q10) Do the teachers inform you about your expected competencies, course outcomes and programme outcomes?

- 4-Everytime
- 3-Usually
- 2-Occasionally / sometimes
- 1-Rarely
- 0-Never

Q 11) Does your teacher do a necessary follow up with an assigned task to you?

4-Everytime

3-Usually

2-Occasionally / sometimes

1-Rarely

0-Never

Q12) Do the teachers illustrate the concepts through examples and applications?

4-Everytime

3-Usually

2-Occasionally / sometimes

1-Rarely

0-Never

Q 13) Do the teachers identify your strengths and encourage you with providing right level of challenges?

4-Fully

3-Reasonably

2-Partially

1-Slightly

0-Unable to

Q 14) Are your teachers able to identify your weaknesses and help you to overcome them?

4-Everytime

3-Usually

2-Occasionally / sometime

1-Rarely

0-Never

Q 15) Does the institution make effort to engage students in the monitoring, review and continuous quality improvement of the teaching learning process?

4-Strongly agree

3-Agree

2-Neutral

1-Disagree

0-Strongly Disagree

Q 16) Do the teachers use student centric methods such as participative learning and problem solving methodologies for enhancing learning experiences?

4-To a great extent

3-Moderate

2-Somewhat

1-Very little

0-Not at all

Q 17) Do your teachers encourage you to participate in extracurricular activities?

4-Strongly agree

3-Agree

2-Neutral

1-Very little

0-Not at all

Q 18) Are efforts made by the institution / teachers to inculcate soft skills, life skills and employability skills to make you ready for the world of work?

4-To a great extent

3-Moderate

2-Somewhat

1-Very little

0-Not at all

Q19) What percentage of teachers take up academic problems of the students beyond the classroom?

4-Above 90%

3-70 to 89%

2-50 to 69%

1-30 to 49%

0-Below 29%

Q 20) Is the overall quality of teaching-learning process in your institution very good ?

4-Strongly agree

3-Agree

2-Neutral

1-Disagree

0-Strongly disagree

Q 21) Give observations / suggestions to improve the overall teaching – learning experience in your institution.

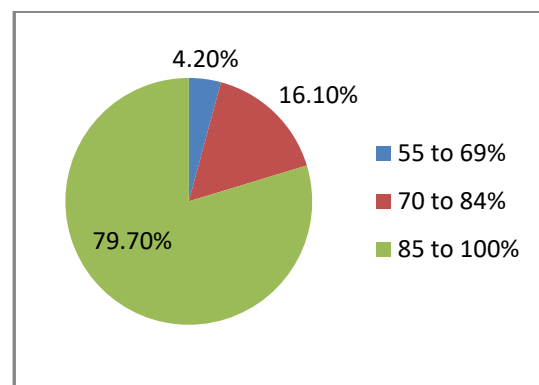
## FEEDBACK ANALYSIS

### Feedback from Students

The feedback obtained from students is analyzed and reported. Responses of 192 respondents were analyzed. SPSS software is used for analysis of the statistical data. The report prepared is used to identify weak points and take steps to improve them.

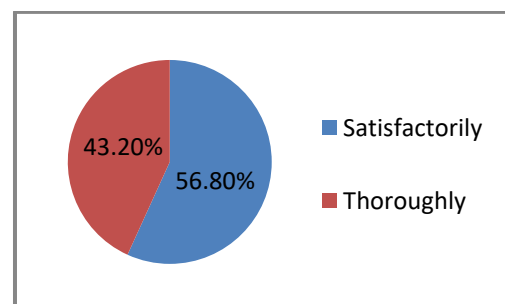
Q1) How much of the syllabus was covered in the class?

Particulars	Frequency	Percent	Mean	Rating
55 to 69%	8	4.2	3.76	Excellent
70 to 84%	31	16.1		
85 to 100%	153	79.7		
Total	192	100.0		



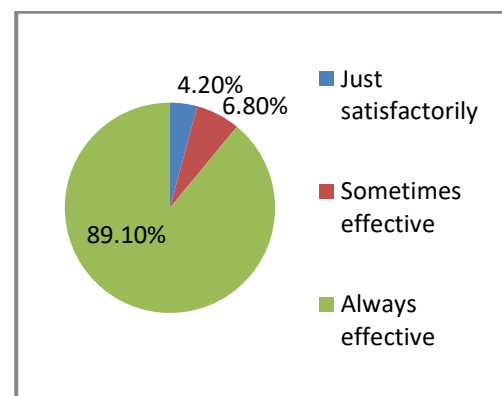
Q2) How well did the teachers prepare for the classes?

Particulars	Frequency	Percent	Mean	Rating
Satisfactorily	109	56.8	3.43	Very Good
Thoroughly	83	43.2		
Total	192	100.0		



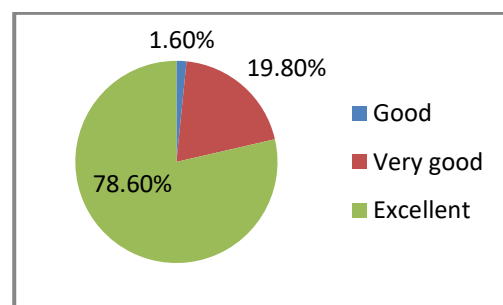
Q3) How well were the teachers able to communicate?

Particulars	Frequency	Percent	Mean	Rating
Just satisfactorily	8	4.2	3.85	Excellent
Sometimes effective	13	6.8		
Always effective	171	89.1		
Total	192	100.0		



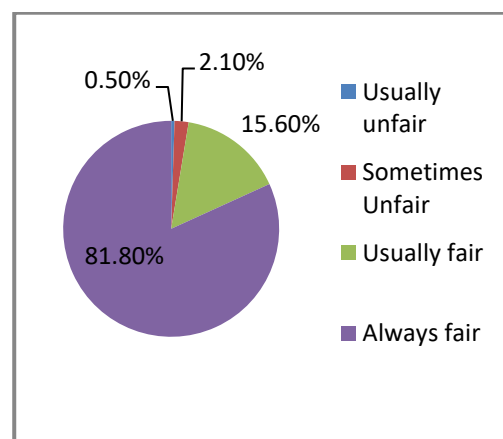
Q4) How will you rate the teacher's in depth knowledge of subject?

Particulars	Frequency	Percent	Mean	Rating
Good	3	1.6	3.77	Excellent
Very good	38	19.8		
Excellent	151	78.6		
Total	192	100.0		



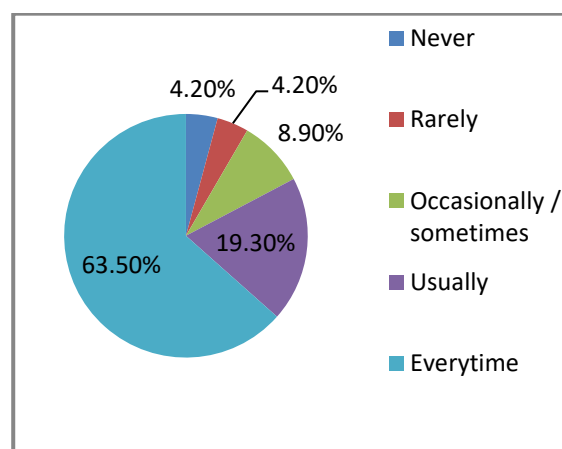
Q5) How fair was the internal evaluation process by the teachers?

Particulars	Frequency	Percent	Mean	Rating
Usually unfair	1	0.5	3.79	Excellent
Sometimes Unfair	4	2.1		
Usually fair	30	15.6		
Always fair	157	81.8		
Total	192	100.0		



Q6) Was your performance in internal evaluation discussed with you?

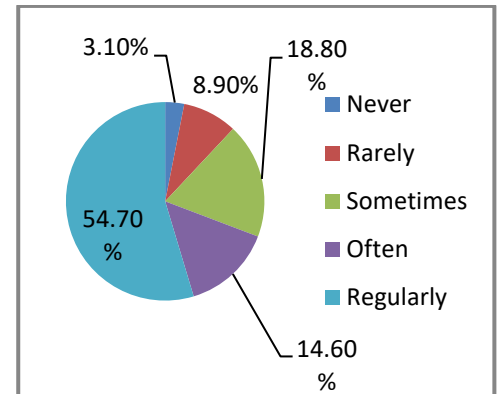
Particulars	Frequency	Percent	Mean	Rating
Never	8	4.2	3.34	Very Good
Rarely	8	4.2		
Occasionally / sometimes	17	8.9		
Usually	37	19.3		
Every time	122	63.5		
Total	192	100.0		





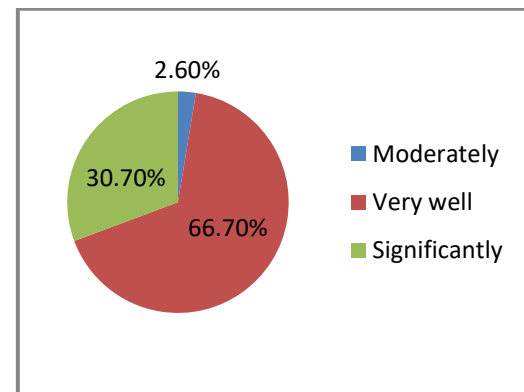
Q7) Does the institution take active interest in promoting exposure through educational trips?

Particulars	Frequency	Percent	Mean	Rating
Never	6	3.1	3.09	Very Good
Rarely	17	8.9		
Sometimes	36	18.8		
Often	28	14.6		
Regularly	105	54.7		
Total	192	100.0		



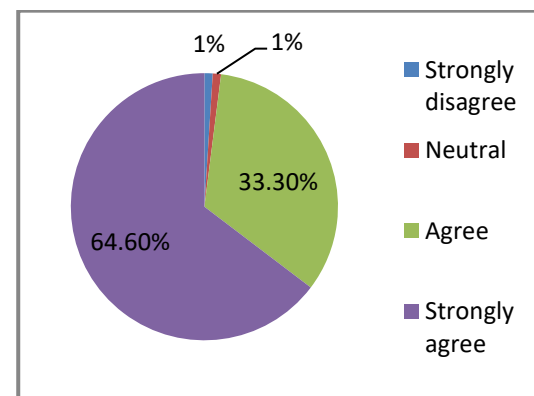
Q 8) Is the teaching and learning process in your institution helpful in cognitive, social and emotional growth?

Particulars	Frequency	Percent	Mean	Rating
Moderately	5	2.6	3.28	Very Good
Very well	128	66.7		
Significantly	59	30.7		
Total	192	100.0		



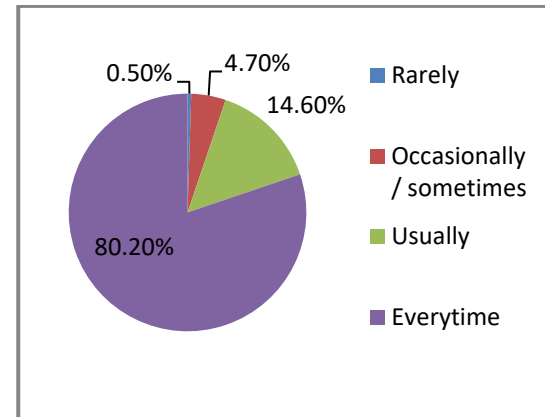
Q9) Does the institution provides multiple opportunities to learn and grow?

Particulars	Frequency	Percent	Mean	Rating
Strongly disagree	2	1.0	3.6	Excellent
Neutral	2	1.0		
Agree	64	33.3		
Strongly agree	124	64.6		
Total	192	100.0		



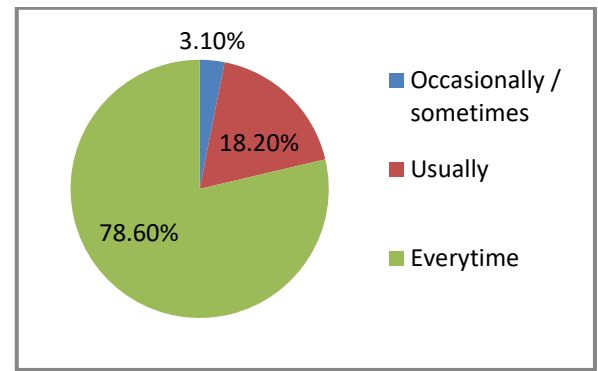
Q10) Do the teachers inform you about your expected competencies, course outcomes and program outcomes?

Particulars	Frequency	Percent	Mean	Rating
Rarely	1	0.5	3.74	Excellent
Occasionally / sometimes	9	4.7		
Usually	28	14.6		
Every time	154	80.2		
Total	192	100.0		



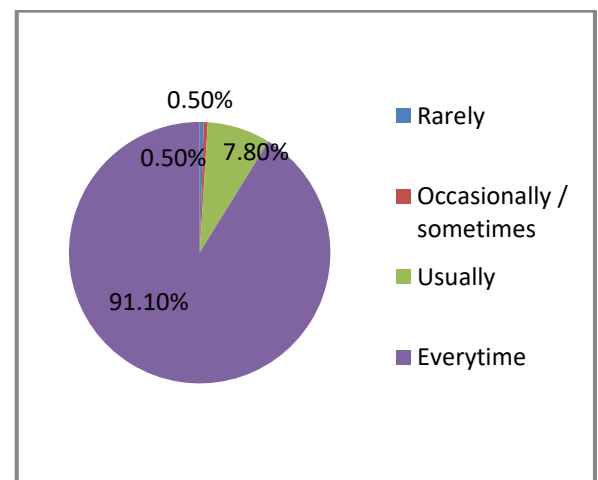
Q11) Does your teacher do a necessary follow up with an assigned task to you?

Particulars	Frequency	Percent	Mean	Rating
Occasionally / sometimes	6	3.1	3.76	Excellent
Usually	35	18.2		
Every time	151	78.6		
Total	192	100.0		



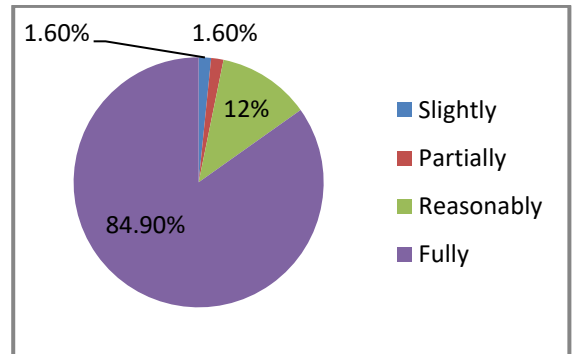
Q12) Do the teachers illustrate the concepts through examples and applications?

Particulars	Frequency	Percent	Mean	Rating
Rarely	1	0.5	3.9	Excellent
Occasionally / sometimes	1	0.5		
Usually	15	7.8		
Every time	175	91.1		
Total	192	100.0		



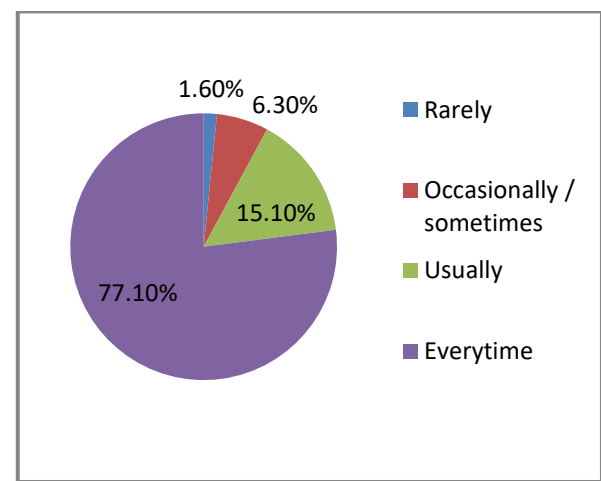
Q13) Do the teachers identify your strengths and encourage you with providing right level of challenges?

Particulars	Frequency	Percent	Mean	Rating
Slightly	3	1.6	3.8	Excellent
Partially	3	1.6		
Reasonably	23	12.0		
Fully	163	84.9		
Total	192	100.0		



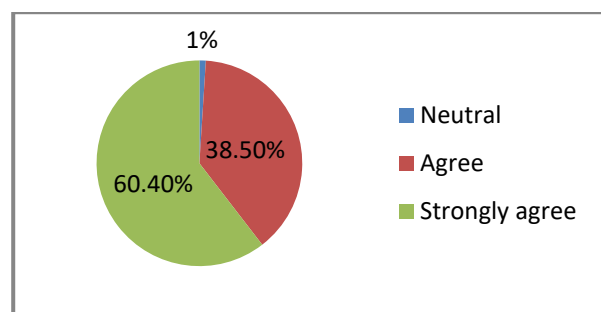
Q14) Are your teachers able to identify your weaknesses and help you to overcome them?

Particulars	Frequency	Percent	Mean	Rating
Rarely	3	1.6	3.68	Excellent
Occasionally / sometimes	12	6.3		
Usually	29	15.1		
Every time	148	77.1		
Total	192	100.0		



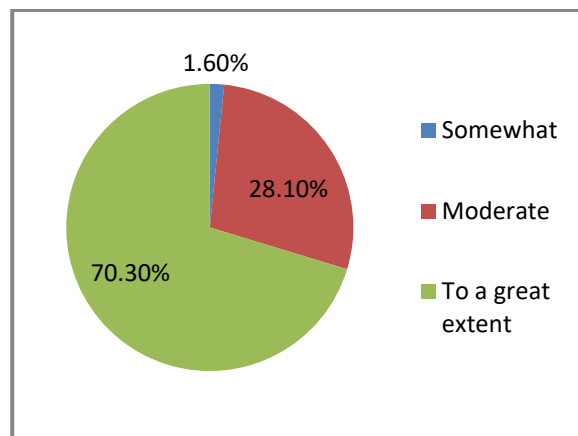
Q15) Does the institution make effort to engage students in the monitoring, review and continuous quality improvement of the teaching learning process?

Particulars	Frequency	Percent	Mean	Rating
Neutral	2	1.0	3.59	Excellent
Agree	74	38.5		
Strongly agree	116	60.4		
Total	192	100.0		



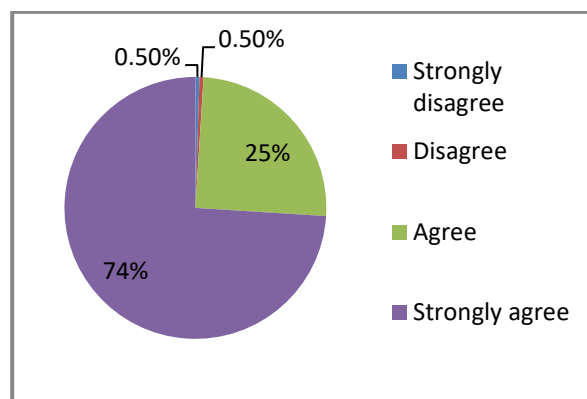
Q16) Do the teachers use student centric methods such as participative learning and problem solving methodologies for enhancing learning experiences?

Particulars	Frequency	Percent	Mean	Rating
Somewhat	3	1.6	3.69	Excellent
Moderate	54	28.1		
To a great extent	135	70.3		
Total	192	100.0		



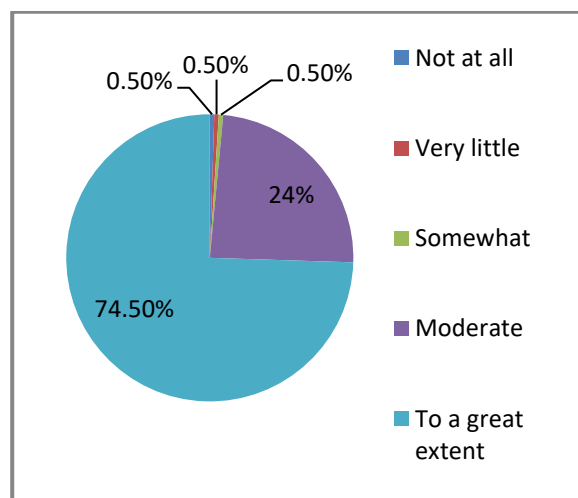
Q17) Do your teachers encourage you to participate in extracurricular activities?

Particulars	Frequency	Percent	Mean	Rating
Strongly disagree	1	0.5	3.71	Excellent
Disagree	1	0.5		
Agree	48	25.0		
Strongly agree	142	74.0		
Total	192	100.0		



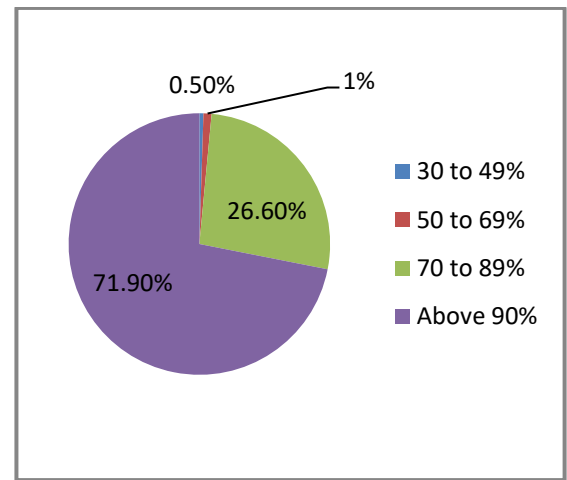
Q18) Are efforts made by the institution / teachers to inculcate soft skills, life skills and employability skills to make you ready for the world of work?

Particulars	Frequency	Percent	Mean	Rating
Not at all	1	0.5	3.71	Excellent
Very little	1	0.5		
Somewhat	1	0.5		
Moderate	46	24.0		
To a great extent	143	74.5		
Total	192	100.0		



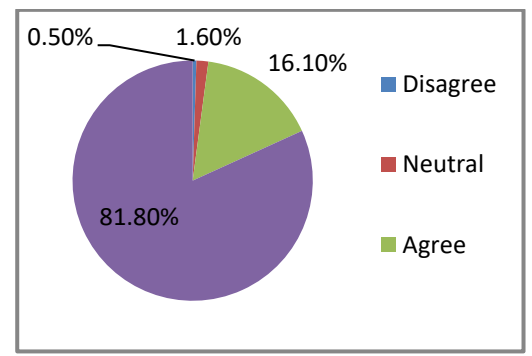
Q19) What percentage of teachers take up academic problems of the students beyond the classroom?

Particulars	Frequency	Percent	Mean	Rating
30 to 49%	1	0.5	3.7	Excellent
50 to 69%	2	1.0		
70 to 89%	51	26.6		
Above 90%	138	71.9		
Total	192	100.0		



Q 20) Is the overall quality of teaching-learning process in your institution very good?

Particulars	Frequency	Percent	Mean	Rating
Disagree	1	0.5	3.79	Excellent
Neutral	3	1.6		
Agree	31	16.1		
Strongly Agree	157	81.8		
Total	192	100.0		



## **OBSERVATION:**

Out of 20 parameters, 16 were rated as excellent and 4 were rated as very good. The overall quality of teaching-learning process in the institution was given a mean score of 3.79. Students complained for online classes and offline exams.

## **SUGGESTIONS GIVEN BY STUDENTS:**

- Students insisted for offline classes.
- Students demanded more educational trips as no trip was planned during the year due to Covid-19 restrictions.
- Demand for more use of digital classrooms.
- Students appreciated the efforts of teachers in making mentorship successful. A few students demanded personal mentoring.

## **STRENGTHS:**

- Classes are conducted on regular basis whether online or offline.
- Continuous assessment
- Consistency in teaching was well appreciated.
- Teachers are cooperative & supportive in every possible manner.
- Equal opportunity for girls to participate in extracurricular activities.
- Congenial, safe & secure environment for each and every girl student.
- Teachers inform students about expected competencies, course outcomes and program outcomes
- Regular seminars/expert lectures were organized in online mode.