

**Student Satisfaction Survey 2019-20**

**Criteria: Teaching-Learning and Evaluation**

Instructions to fill the questionnaire

- All questions should be compulsorily attempted
- Each question has five responses, choose the most appropriate one

A) Please confirm this is the first and only time you answer this survey.

a) Yes

b) No

B) Age:

C) College Name:

D) What degree program are you pursuing now?

a) Bachelor's

b) Master's

c) Bachelor's + Add on course

d) Bachelor's (Vocational)

e) Other

E) What subject are you currently pursuing?

a) Arts

b) Commerce

c) Medical/Non-medical/Home science/Biotechnology

d) BBA

e) Other

1) How much of the syllabus was covered in the class?

4- 85 to 100%

3- 70 to 84%

2- 55 to 69%

1-30 to 54%

0-Below 30%

2) How well did the teachers prepare for the classes?

4-Thoroughly

3-Satisfactorily

2-Poorly

1-Indifferently

0-Won't teach at all

3) How well were the teachers able to communicate?

4-Always effective

3-Sometimes effective

2-Just satisfactorily

1-Generally ineffective

0-Very poor communication

4) How will you rate the teacher's in depth knowledge of subject?

4-Excellent

3-Very good

2-Good

1-Fair

0-Poor

5) How fair was the internal evaluation process by the teachers?

4-Always fair

3-Usually fair

2-Sometimes Unfair

1-Usually unfair

0-Unfair

6) Was your performance in internal evaluation discussed with you?

4-Everytime

3-Usually

2-Occasionally / sometimes

1-Rarely

0-Never

7) Does the institute take active interest in promoting exposure through educational trips?

- 4-Regularly
- 3-Often
- 2-Sometimes
- 1-Rarely
- 0-Never

8) Is the teaching and learning process in your institution helpful in cognitive, social and emotional growth?

- 4-Significantly
- 3-Very well
- 2-Moderately
- 1-Marginally
- 0-Not at all

9) Does the institution provide multiple opportunities to learn and grow?

- 4-Strongly agree
- 3-Agree
- 2-Neutral
- 1-Disagree
- 0-Strongly disagree

10) Do the teachers inform you about your expected competencies, course outcomes and programme outcomes?

- 4-Everytime
- 3-Usually
- 2-Occasionally / sometimes
- 1-Rarely
- 0-Never

11) Does your teacher do a necessary follow up with an assigned task to you?

- 4-Everytime
- 3-Usually
- 2-Occasionally / sometimes
- 1-Rarely

0-Never

12) Do the teachers illustrate the concepts through examples and applications?

4-Everytime

3-Usually

2-Occasionally / sometimes

1-Rarely

0-Never

13) Do the teachers identify your strengths and encourage you with providing right level of challenges

4-Fully

3-Reasonably

2-Partially

1-Slightly

0-Unable to

14) Are your teachers able to identify your weaknesses and help you to overcome them?

4-Everytime

3-Usually

2-Occasionally / sometime

1-Rarely

0-Never

15) Does the institution make effort to engage students in the monitoring , review and continuous quality improvement of the teaching learning process ?

4-Strongly agree

3-Agree

2-Neutral

1-Disagree

0-Strongly disagree

16) Do the teachers use student centric methods such as participative learning and problem solving methodologies for enhancing learning experiences ?

4-To a great extent

3-Moderate

2-Somewhat

1-Very little

0-Not at all

17) Do your teachers encourage you to participate in extracurricular activities ?

4-Strongly agree

3-Agree

2-Neutral

1-Very little

0-Not at all

18) Are efforts made by the institute / teachers to inculcate soft skills, life skills and employability skills to make you ready for the world of work ?

4-To a great extent

3-Moderate

2-Somewhat

1-Very little

0-Not at all

19) What percentage of teachers take up academic problems of the students beyond the classroom ?

4-Above 90%

3-70 to 89%

2-50 to 69%

1-30 to 49%

0-Below 29%

20) Is the overall quality of teaching-learning process in your institute very good ?

4-Strongly agree

3-Agree

2-Neutral

1-Disagree

0-Strongly disagree

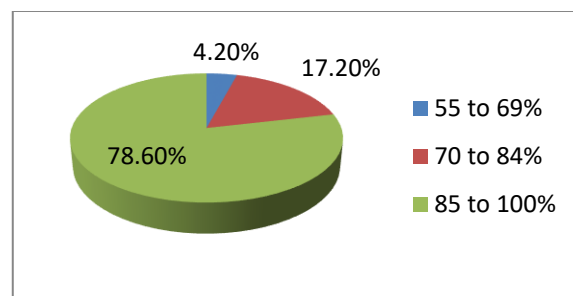
21) Give observations / suggestions to improve the overall teaching – learning experience in your institution.

## Survey Feedback From Students

The feedback obtained from students is analyzed and reported. Responses of 192 respondents was analyzed. SPSS software is used for analysis of the statistical data. The report prepared is used to identify weak points and take steps to improve them.

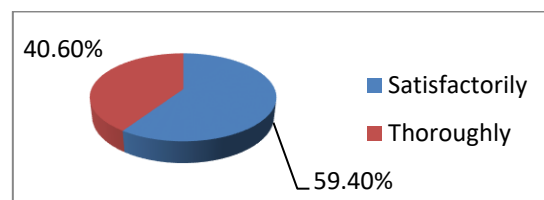
Q1) How much of the syllabus was covered in the class?

Particulars	Frequency	Percent	Mean	Rating
55 to 69%	8	4.2	3.744792	Excellent
70 to 84%	33	17.2		
85 to 100%	151	78.6		
Total	192	100		



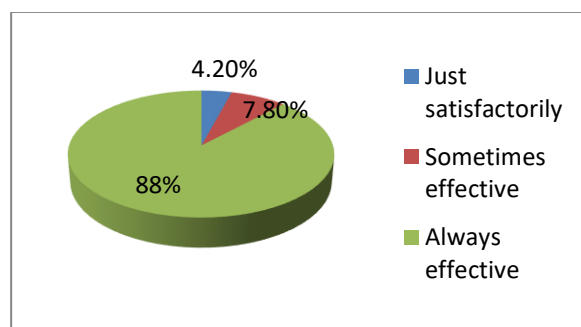
Q2) How well did the teachers prepare for the classes?

Particulars	Frequency	Percent	Mean	Rating
Satisfactorily	114	59.4	3.40625	Very Good
Thoroughly	78	40.6		
Total	192	100.0		



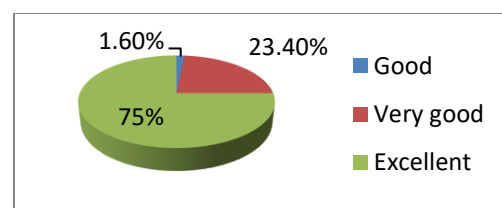
Q3) How well were the teachers able to communicate?

Particulars	Frequency	Percent	Mean	Rating
Just satisfactorily	8	4.2	3.8	Excellent
Sometimes effective	15	7.8		
Always effective	169	88.0		
Total	192	100.0		



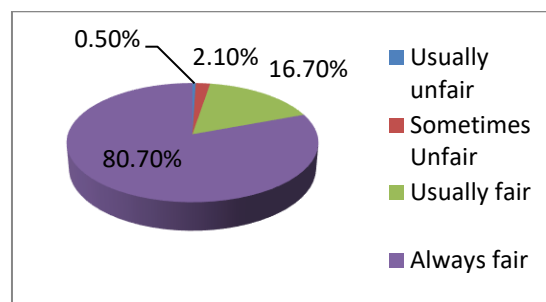
Q4) How will you rate the teacher's in depth knowledge of subject?

Particulars	Frequency	Percent	Mean	Rating
Good	3	1.6	3.73	Excellent
Very good	45	23.4		
Excellent	144	75.0		
Total	192	100.0		



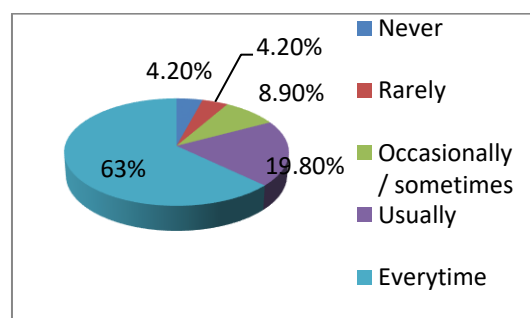
Q5) How fair was the internal evaluation process by the teachers?

Particulars	Frequency	Percent	Mean	Rating
Usually unfair	1	.5	3.8	Excellent
Sometimes Unfair	4	2.1		
Usually fair	32	16.7		
Always fair	155	80.7		
Total	192	100.0		



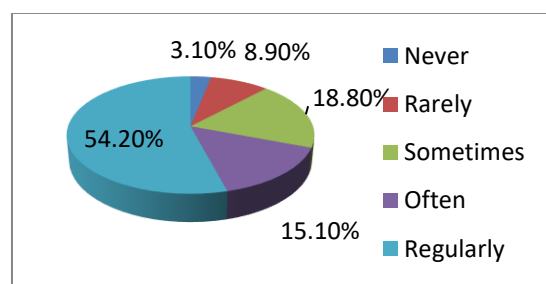
Q6) Was your performance in internal evaluation discussed with you?

Particulars	Frequency	Percent	Mean	Rating
Never	8	4.2	3.33	Very good
Rarely	8	4.2		
Occasionally / sometimes	17	8.9		
Usually	38	19.8		
Everytime	121	63.0		
Total	192	100.0		



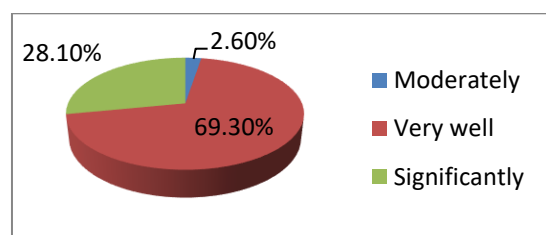
Q7) Does the institute take active interest in promoting exposure through educational trips?

Particulars	Frequency	Percent	Mean	Rating
Never	6	3.1	3.08	Very good
Rarely	17	8.9		
Sometimes	36	18.8		
Often	29	15.1		
Regularly	104	54.2		
Total	192	100		



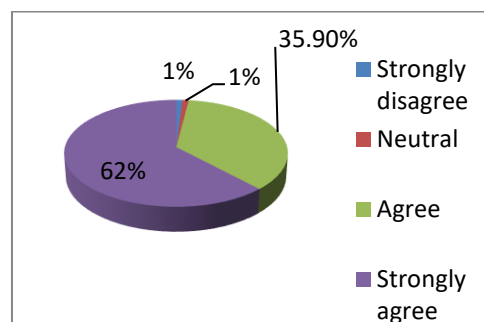
Q8) Is the teaching and learning process in your institution helpful in cognitive, social and emotional growth?

Particulars	Frequency	Percent	Mean	Rating
Moderately	5	2.6	3.3	Very Good
Very well	133	69.3		
Significantly	54	28.1		
Total	192	100.0		



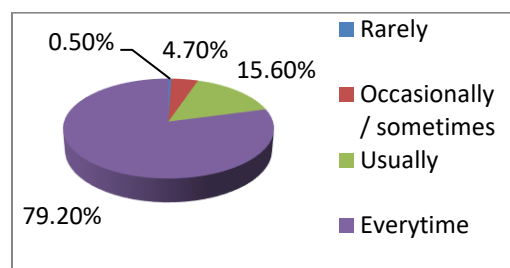
Q9) Does the institution provides multiple opportunities to learn and grow?

Particulars	Frequency	Percent	Mean	Rating
Strongly disagree	2	1	3.58	Excellent
Neutral	2	1		
Agree	69	35.9		
Strongly agree	119	62		
Total	192	100		



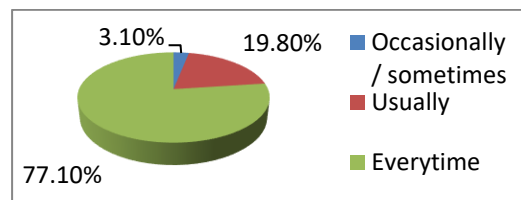
Q10) Do the teachers inform you about your expected competencies, course outcomes and program outcomes?

Particulars	Frequency	Percent	Mean	Rating
Rarely	1	0.5	3.73	Excellent
Occasionally / sometimes	9	4.7		
Usually	30	15.6		
Everytime	152	79.2		
Total	192	100		



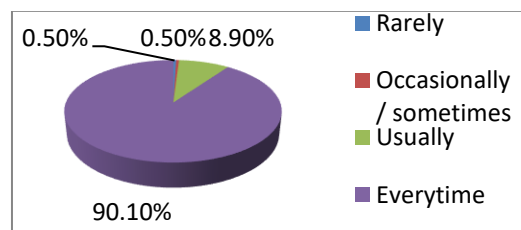
Q11) Does your teacher do a necessary follow up with an assigned task to you?

Particulars	Frequency	Percent	Mean	Rating
Occasionally / sometimes	6	3.1	3.74	Excellent
Usually	38	19.8		
Everytime	148	77.1		
Total	192	100		



Q12) Do the teachers illustrate the concepts through examples and applications?

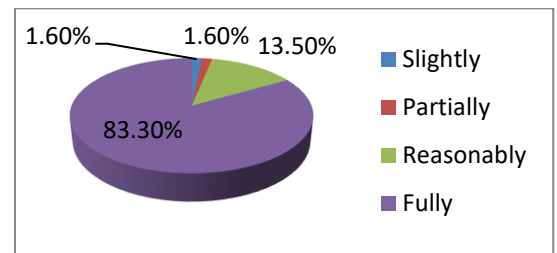
Particulars	Frequency	Percent	Mean	Rating
Rarely	1	0.5	3.89	Excellent
Occasionally / sometimes	1	0.5		
Usually	17	8.9		
Everytime	173	90.1		
Total	192	100		





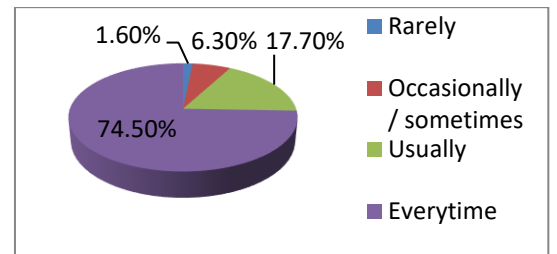
Q13) Do the teachers identify your strengths and encourage you with providing right level of challenges?

Particulars	Frequency	Percent	Mean	Rating
Slightly	3	1.6	3.79	Excellent
Partially	3	1.6		
Reasonably	26	13.5		
Fully	160	83.3		
Total	192	100		



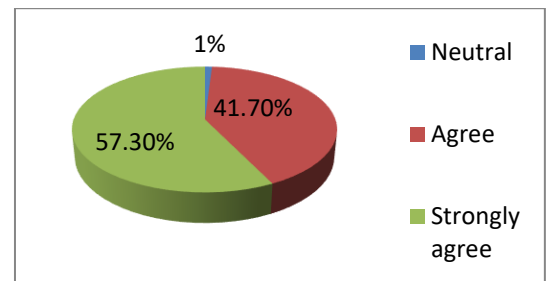
Q14) Are your teachers able to identify your weaknesses and help you to overcome them?

Particulars	Frequency	Percent	Mean	Rating
Rarely	3	1.6	3.65	Excellent
Occasionally / sometimes	12	6.3		
Usually	34	17.7		
Everytime	143	74.5		
Total	192	100		



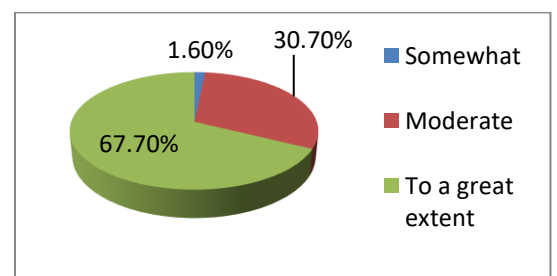
Q15) Does the institution make effort to engage students in the monitoring, review and continuous quality improvement of the teaching learning process?

Particulars	Frequency	Percent	Mean	Rating
Neutral	2	1	3.56	Excellent
Agree	80	41.7		
Strongly agree	110	57.3		
Total	192	100		



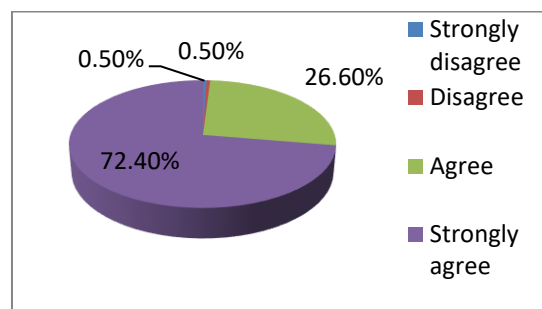
Q16) Do the teachers use student centric methods such as participative learning and problem solving methodologies for enhancing learning experiences?

Particulars	Frequency	Percent	Mean	Rating
Somewhat	3	1.6	3.66	Excellent
Moderate	59	30.7		
To a great extent	130	67.7		
Total	192	100		



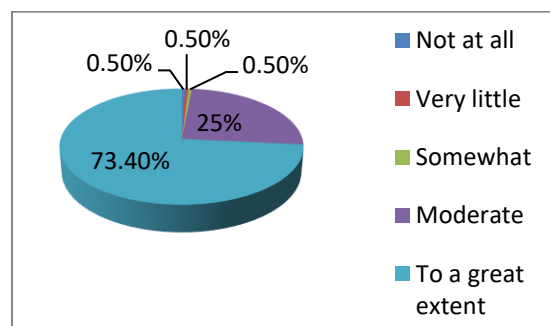
Q17) Do your teachers encourage you to participate in extracurricular activities?

Particulars	Frequency	Percent	Mean	Rating
Strongly disagree	1	0.5	3.7	Excellent
Disagree	1	0.5		
Agree	51	26.6		
Strongly agree	139	72.4		
Total	192	100		



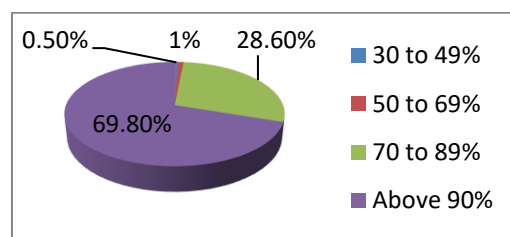
Q18) Are efforts made by the institute / teachers to inculcate soft skills, life skills and employability skills to make you ready for the world of work?

Particulars	Frequency	Percent	Mean	Rating
Not at all	1	0.5	3.7	Excellent
Very little	1	0.5		
Somewhat	1	0.5		
Moderate	48	25		
To a great extent	141	73.4		
Total	192	100		



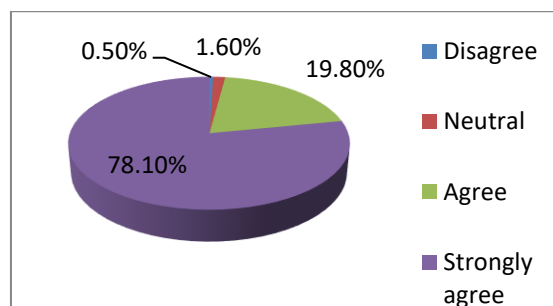
Q19) What percentage of teachers take up academic problems of the students beyond the classroom?

Particulars	Frequency	Percent	Mean	Rating
30 to 49%	1	0.5	3.68	Excellent
50 to 69%	2	1		
70 to 89%	55	28.6		
Above 90%	134	69.8		
Total	192	100		



Q20) Is the overall quality of teaching-learning process in your institute very good?

Particulars	Frequency	Percent	Mean	Rating
Disagree	1	0.5	3.76	Excellent
Neutral	3	1.6		
Agree	38	19.8		
Strongly agree	150	78.1		
Total	192	100		



**Survey Feedback From Students**

### **Observation:**

Out of 20 parameters, 16 were rated as excellent and 4 were rated as very good.

The overall quality of teaching-learning process in the institute was given a mean score of 3.76. The mean score of all the parameters except 2 increased this year. Despite of cancellation of classes in the middle of the session due to covid 19, 79% of the students felt that that 85-100% of the syllabus was covered in the class. Teachers were also successful in identifying the strengths of students and encourage the students with the right level of challenges.

Though the mean score of exposure to educational trips increased substantially this year, yet efforts are being made to plan more trips to benefit the students.

Teachers were able to communicate well with the students. Mentorship is also encouraged in every session for overall development of the girls.

### **Suggestions given by students:**

- Students insisted for seminars on digital teaching once in a month especially for PG students to make learning better.
- Students demanded more educational trips.
- Students wanted more reference books in the library.
- A few of them insisted for digital classrooms.
- More focus on mentorship programs was felt.

### **Strengths:**

- Most of the students were satisfied with the teaching learning process
- Students felt that the institution makes effort to engage students in the monitoring, review and continuous quality improvement of the teaching learning process.
- Mock test and internal test is a good practice for revision and well appreciated.
- Teachers are cooperative & supportive in every possible manner.
- Teachers encourage and motivate students to participate in Extracurricular and co-curricular activities.
- Congenial safe & secure environment for each and every girl student.
- Teachers inform students about expected competencies, course outcomes and program outcomes.
- Necessary follow up with the assigned task to students is done.
- Teachers are successfully identifying the student's Strengths and encouraging them.
- The institution has been successful to inculcate soft skills, life skills, employability skills to make students ready for world of work more than last year, but, this still can be an area of improvement.

